

T.15N. R.64W.

22 • 23

RECEIVED
LARAMIE COUNTY
CHEYENNE, WY.

'94 MAR 25 PM 2 11

138871

CERTIFIED LAND CORNER RECORDATION

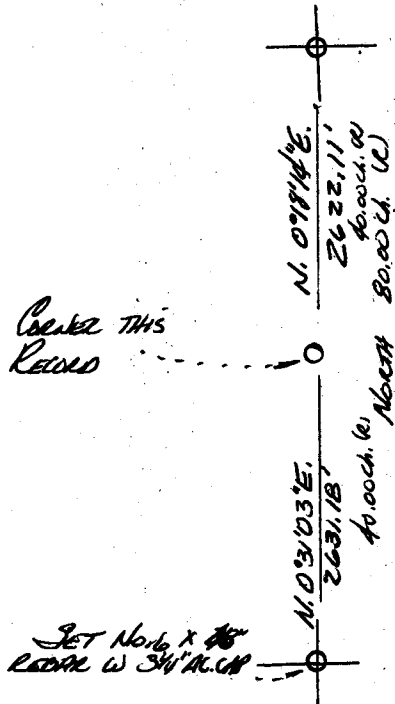
DESCRIPTION OF CORNER EVIDENCE FOUND, AND ORIGINAL RECORD (If known)

G.M.O. RECORD: 40.00 ch. SET A SANDSTONE 16 X 10 X 5 FOR 1/4 SECTION CORNER UNDER JOINT CONTRACT - EDWIN JAMES & ALFRED H. RODGERS U.S. DEPT. SURVEYORS JUNE, 1871
FOUND: 5" X 9" RED SANDSTONE MARKED 1/4 ON W. FACE IN OPEN PRAIRIE LAND.

DESCRIPTION OF MONUMENT AND ACCESSORIES ESTABLISHED TO PERPETUATE THE ORIGINAL LOCATION OF THIS CORNER:

SET: 5" STEEL FENCE POST WITNESS 3' SOUTH
SEE SKETCH TO FOUND OR SET ADJACENT CORNERS.

SKETCH, WITH COURSE AND DISTANCE TO ADJACENT CORNER IF DETERMINED IN THIS SURVEY.
(May Sketch or Paste Reproduction on Reverse Side.)

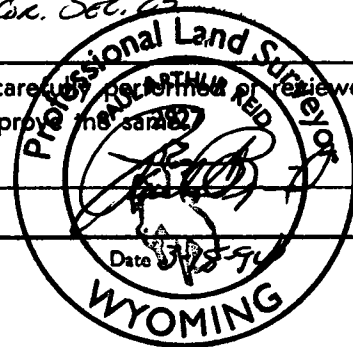


BASIS OF BEARINGS: SOLAR OBSERVATION 1200' ± SOUTH OF NW COR. SEC. 23

I, PAUL A. REID certify that I have carefully examined the work done on the diagrammed corner as reported on this recordation form and approved the same.

Signature of Surveyor

Registration No.



STATE OF WYOMING,
Office of Clerk and Recorder,
County of _____

This "corner record" was filed for record on the _____ day of _____, 19____, was noted on the cross-index plat and is assigned page No. _____, in book No. _____.

T.15N. R.64W.

22 • 23

Cross Index No.	County Official		Mer.
	T.	R.	
P-17	15N	64W.6P	Mer.
_____	T.	R.	Mer.
_____	T.	R.	Mer.
_____	T.	R.	Mer.
_____	T.	R.	Mer.
_____	T.	R.	Mer.
_____	T.	R.	Mer.

BOOK 1369

0536